

CREATE
YOUR STYLE with
CRYSTALLIZED™
– Swarovski Elements










MAKE YOUR CREATIVITY STICK
KIRIGAMI CARD
CHRISTMAS TREE

KIRIGAMI CARD CHRISTMAS TREE



CRYSTALLIZED™ – Swarovski Elements

Supplies & Tools

| Article | Product Group | Article No. | Amount | Size | Colour | Colour Code |
|---|---------------|-------------|----------|------|-----------------------------|-------------|
|  | Pearl | 5810 | 12 pcs. | 6 mm | Crystal Antique Brass Pearl | 001 402 |
|  | Crystal-it | 75011 | 53 pcs. | SS06 | Crystal Dorado | 001 DOR |
|  | Crystal-it | 75011 | 110 pcs. | SS06 | Crystal Golden Shadow | 001 GSHA |
|  | Crystal-it | 75011 | 130 pcs. | SS06 | Emerald | 205 |
|  | Crystal-it | 75011 | 6 pcs. | SS10 | Crystal Dorado | 001 DOR |
|  | Crystal-it | 75011 | 76 pcs. | SS10 | Crystal Golden Shadow | 001 GSHA |
|  | Crystal-it | 75011 | 154 pcs. | SS10 | Emerald | 205 |

Supplies

Cardboard, black, DIN A4
Drawing paper, green, DIN A4
Paper, black, 21x17 cm
Steel wire, black, \varnothing 0.7 mm, 42 cm

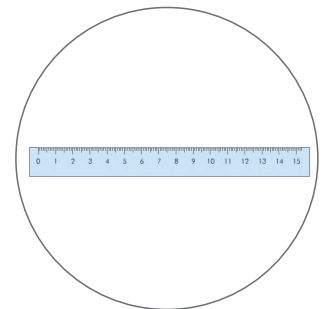
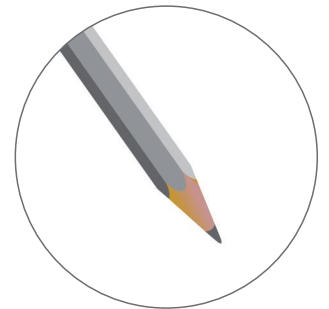
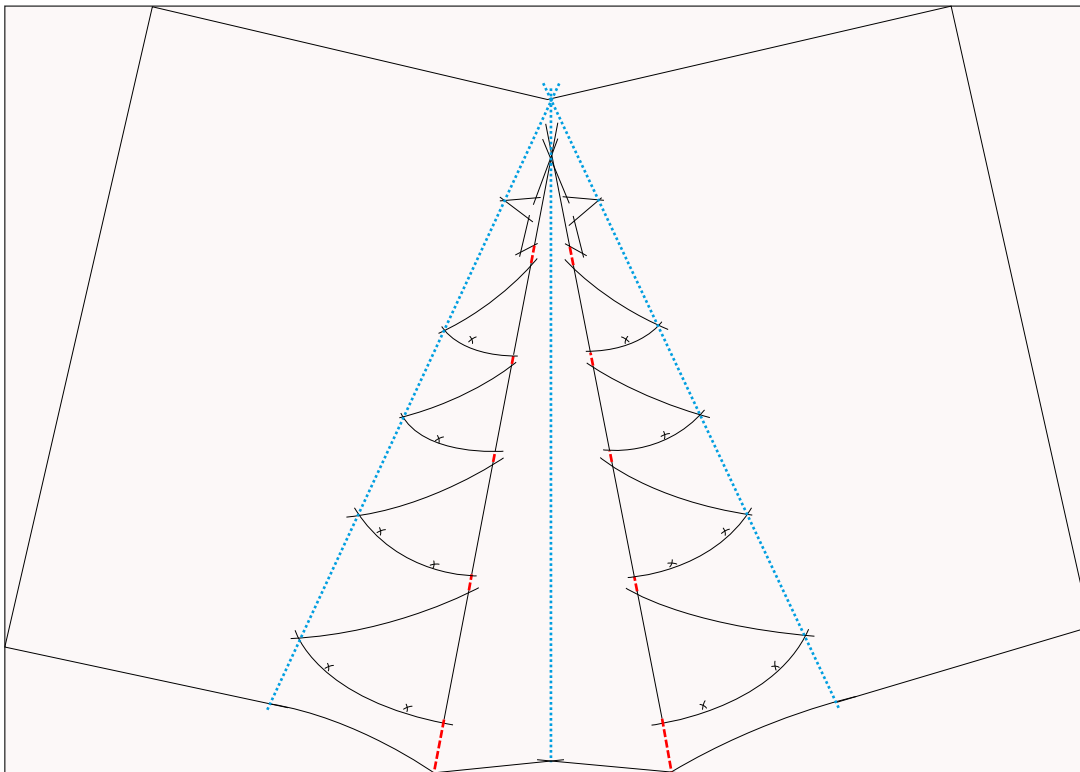
Tools

Cutter, Flat nose pliers, Glue, Needle, Pencil, Ruler, Scissors, Side cutter, Soft mat, Stapler, Transparent paper, Tweezers

Level of Design: INTERMEDIATE

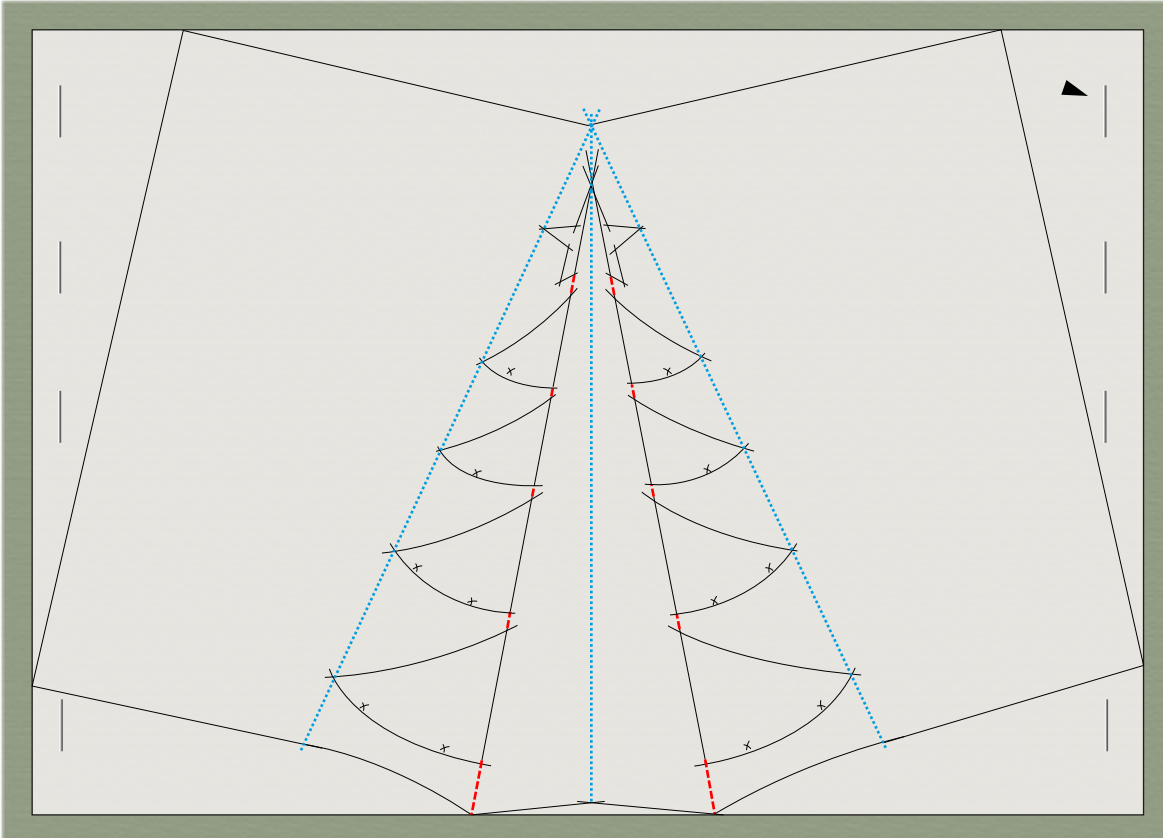
Have a look at the **text instruction** at the last page!

STEP 1

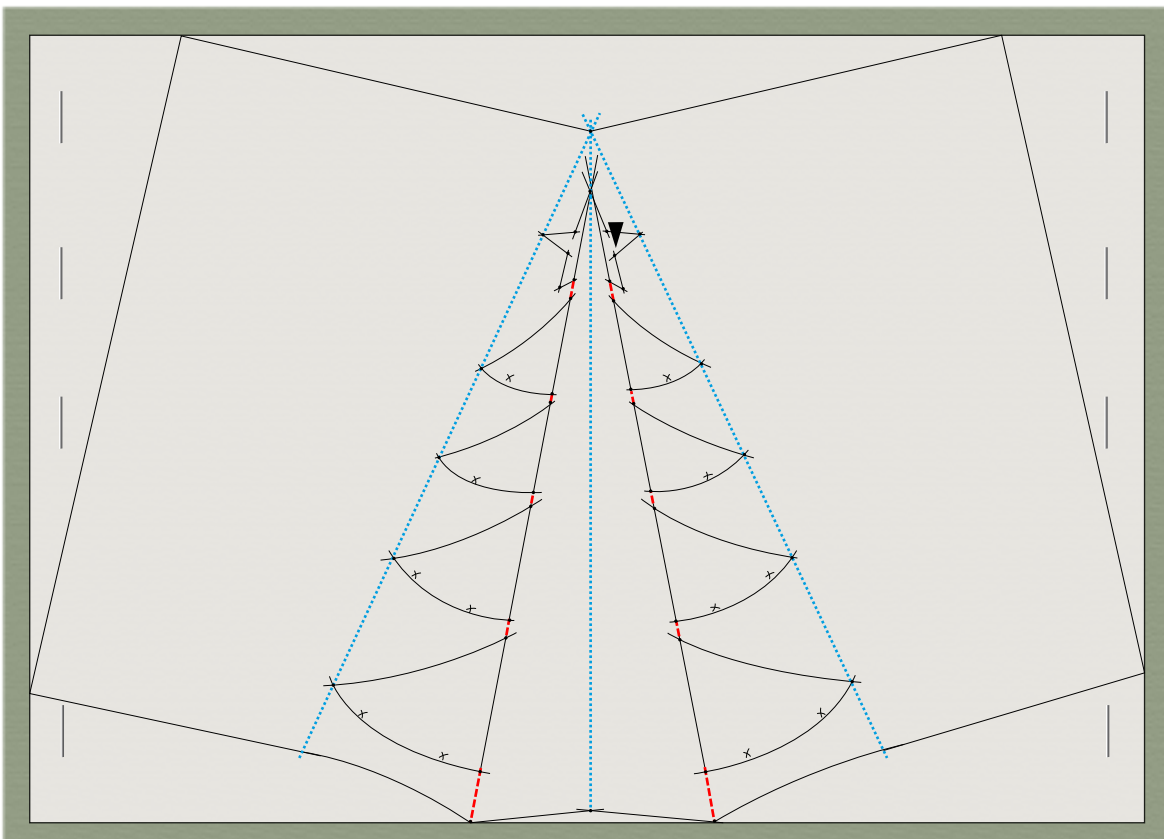


1:2

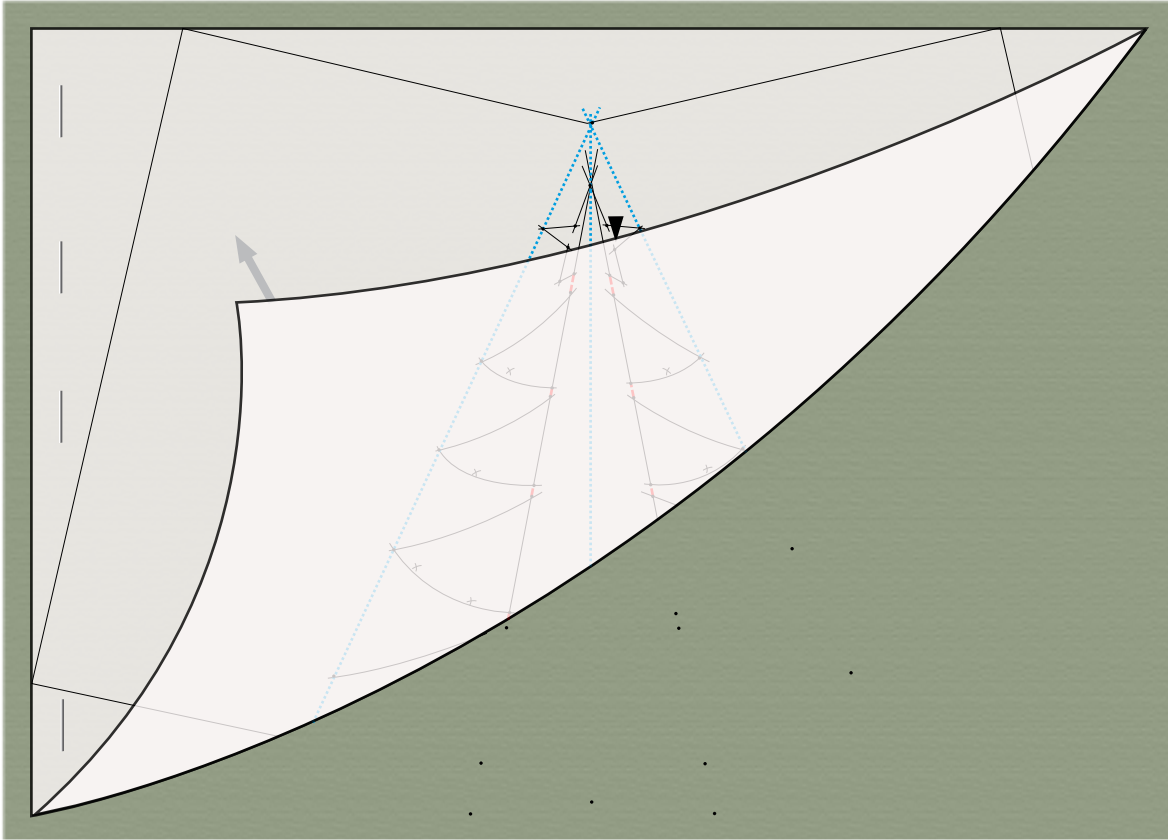
STEP 2



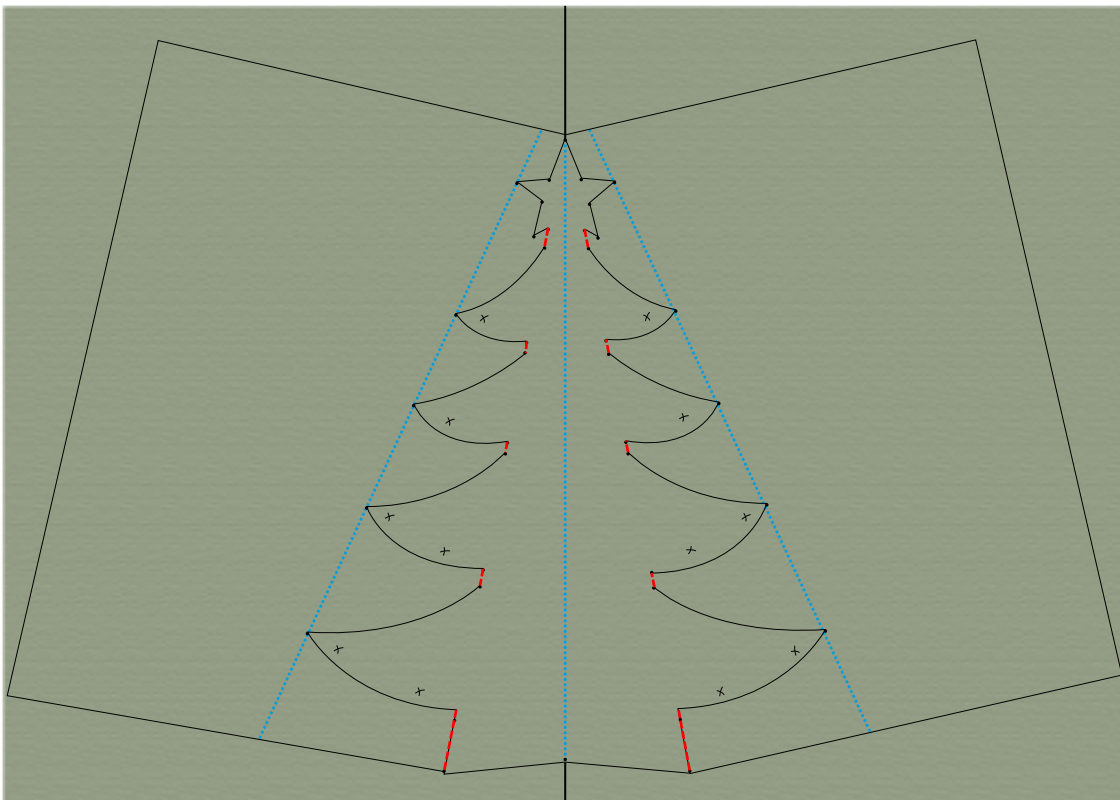
STEP 3

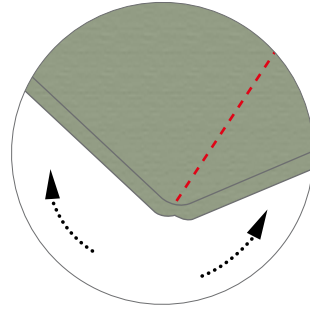
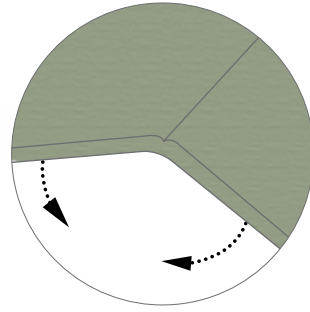
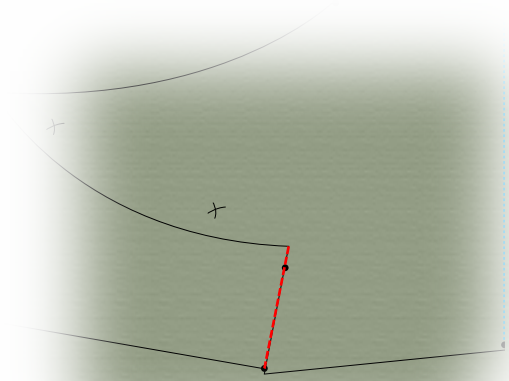
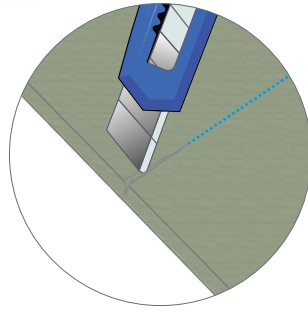
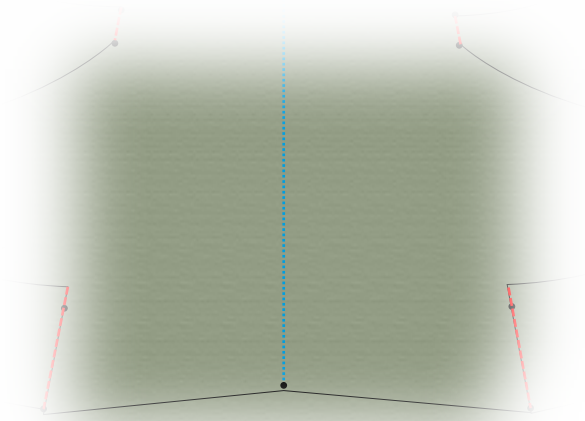


STEP 4

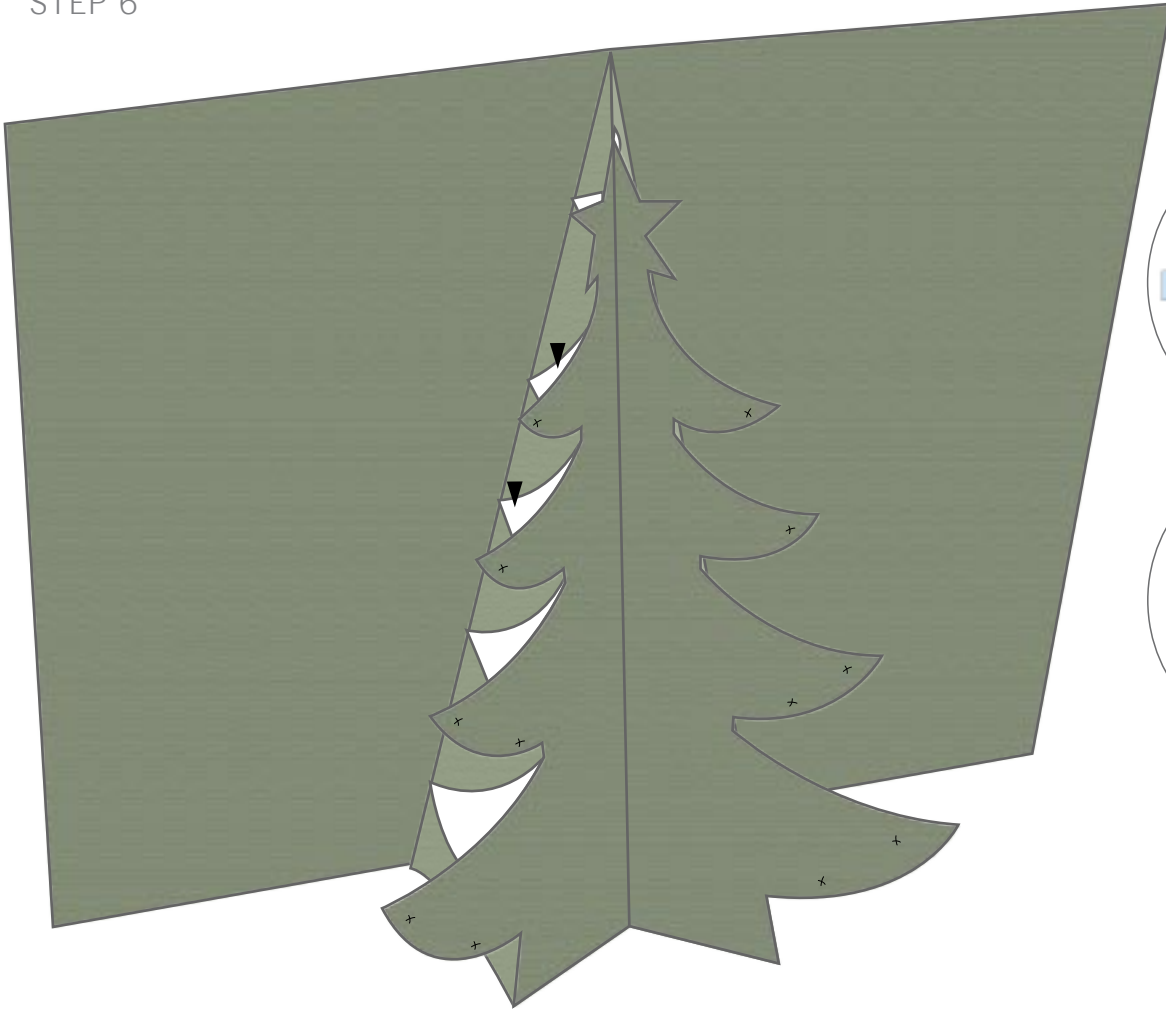


STEP 5

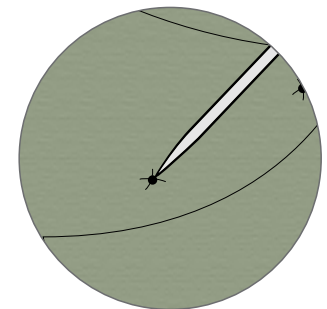
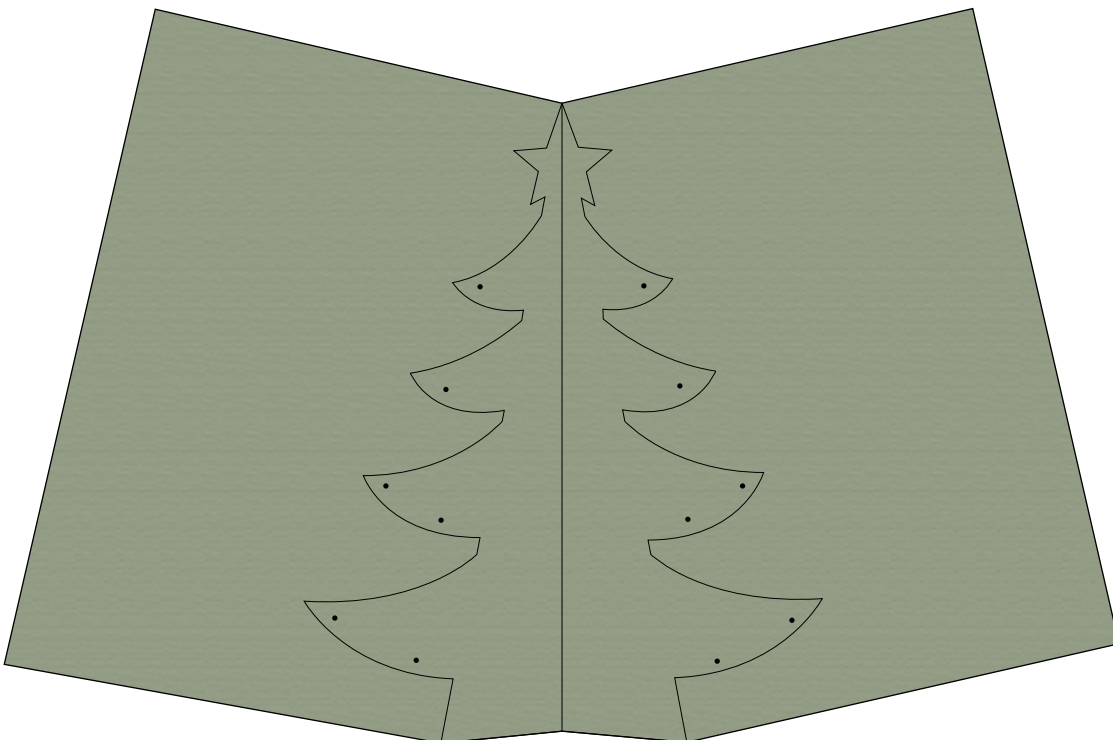




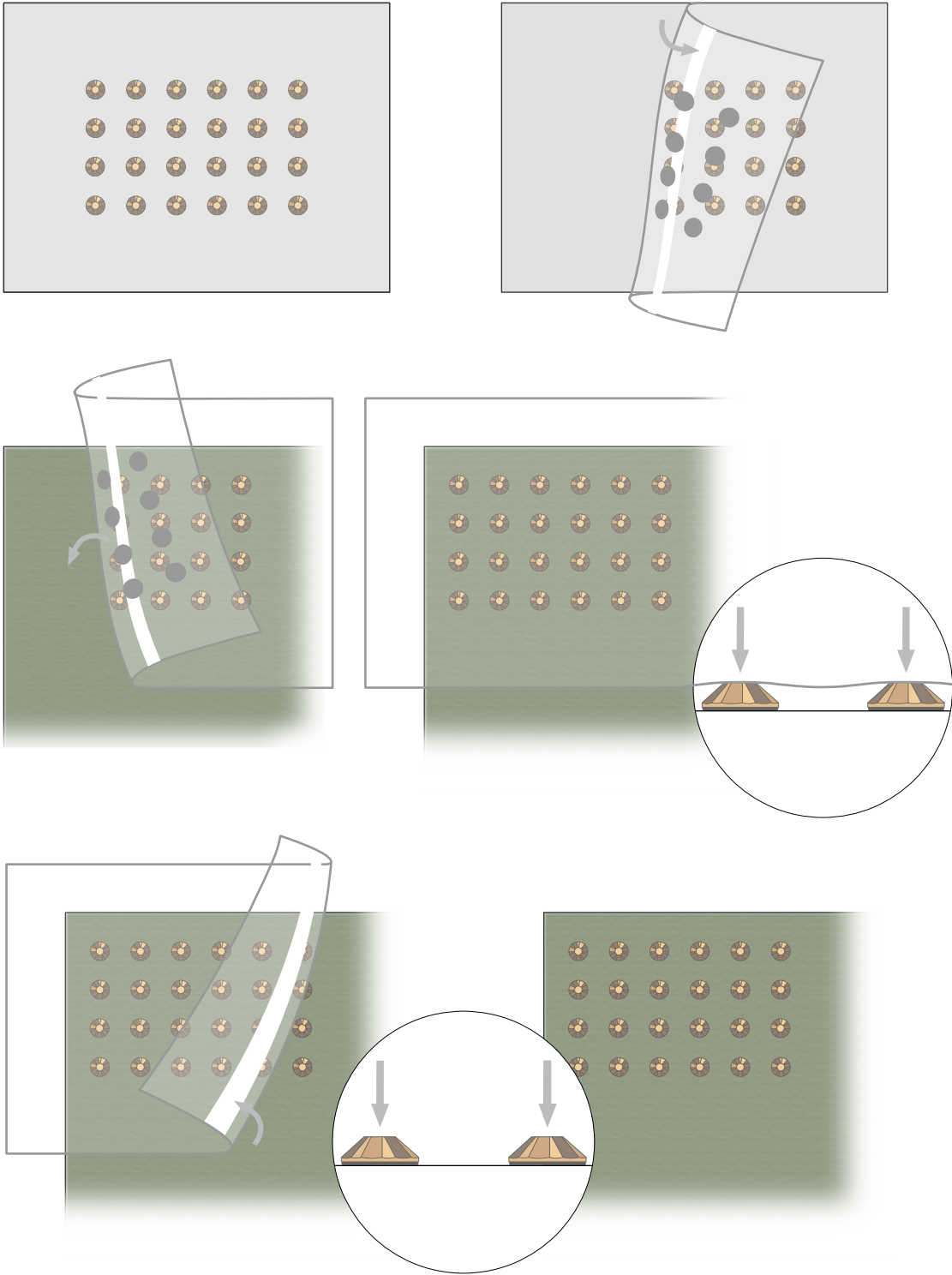
STEP 6



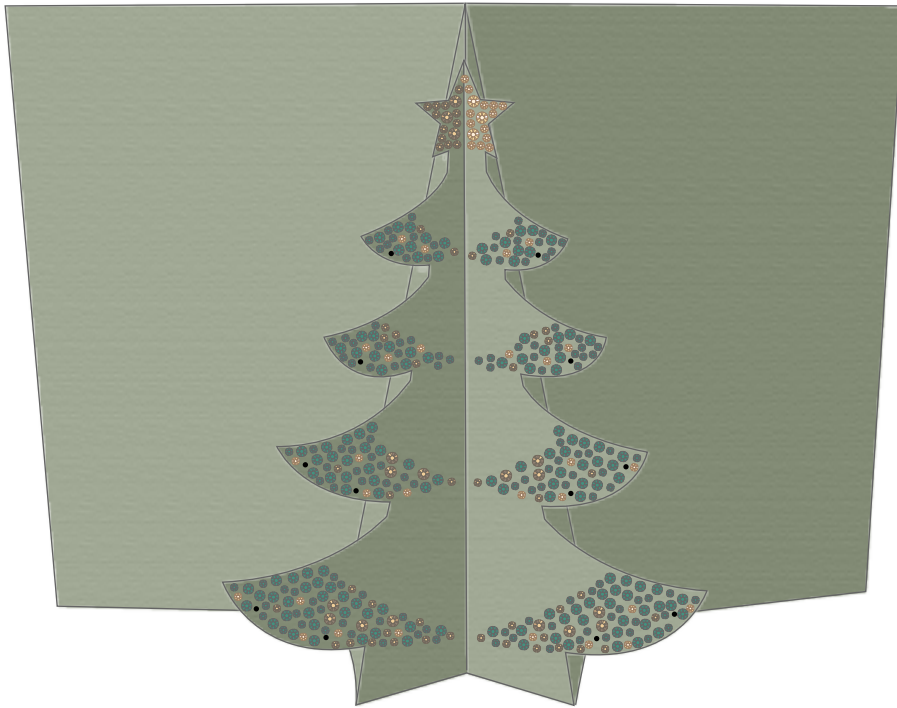
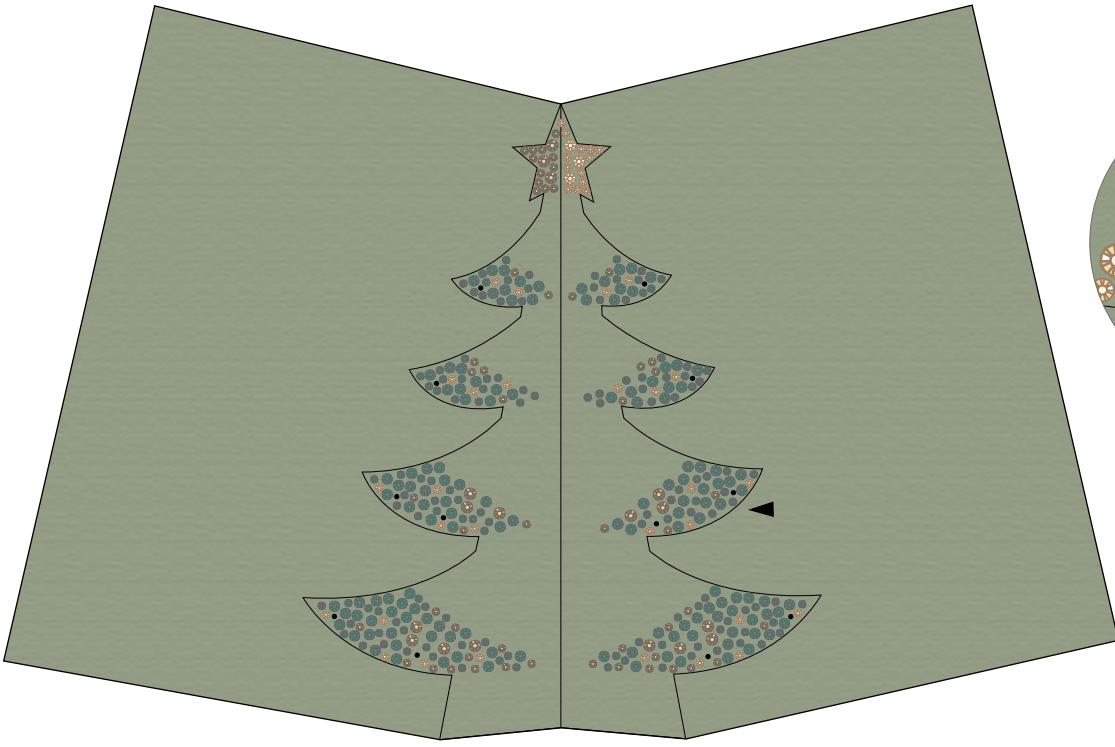
STEP 7



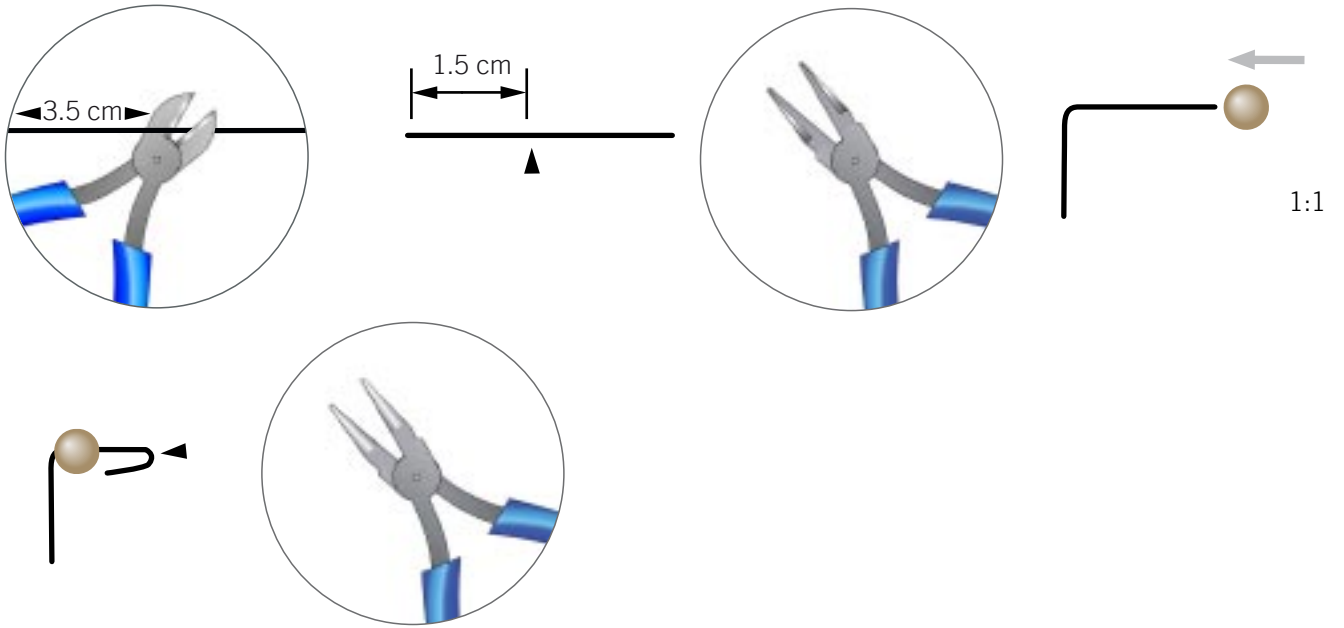
STEP 8



STEP 9

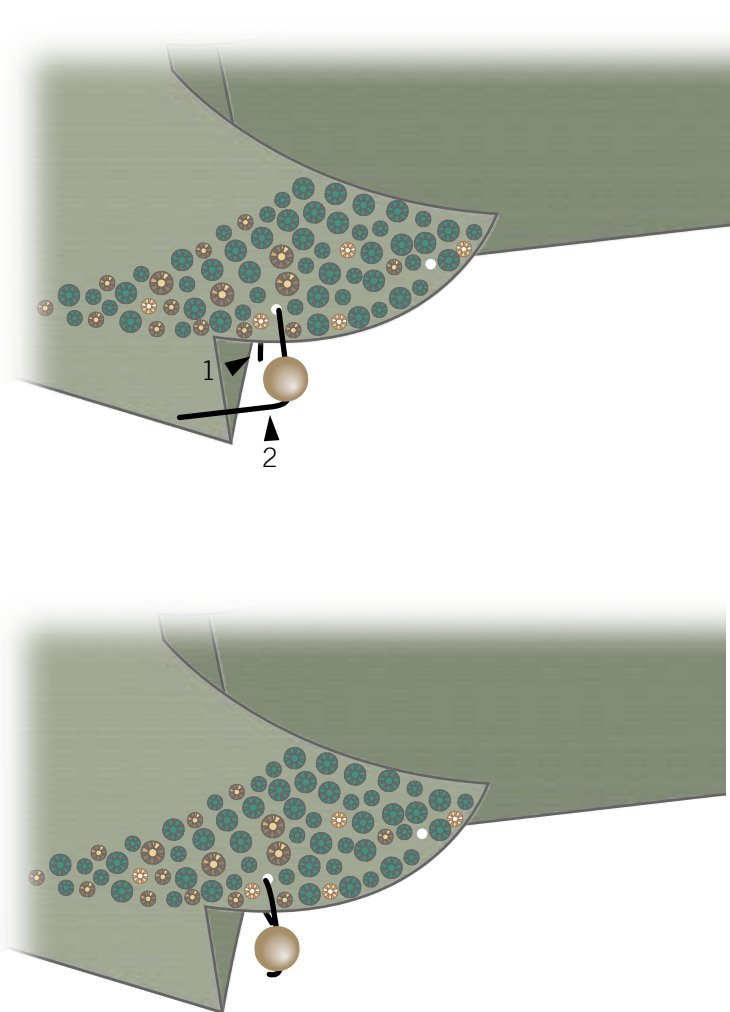


STEP 10



Repeat x11

STEP 11



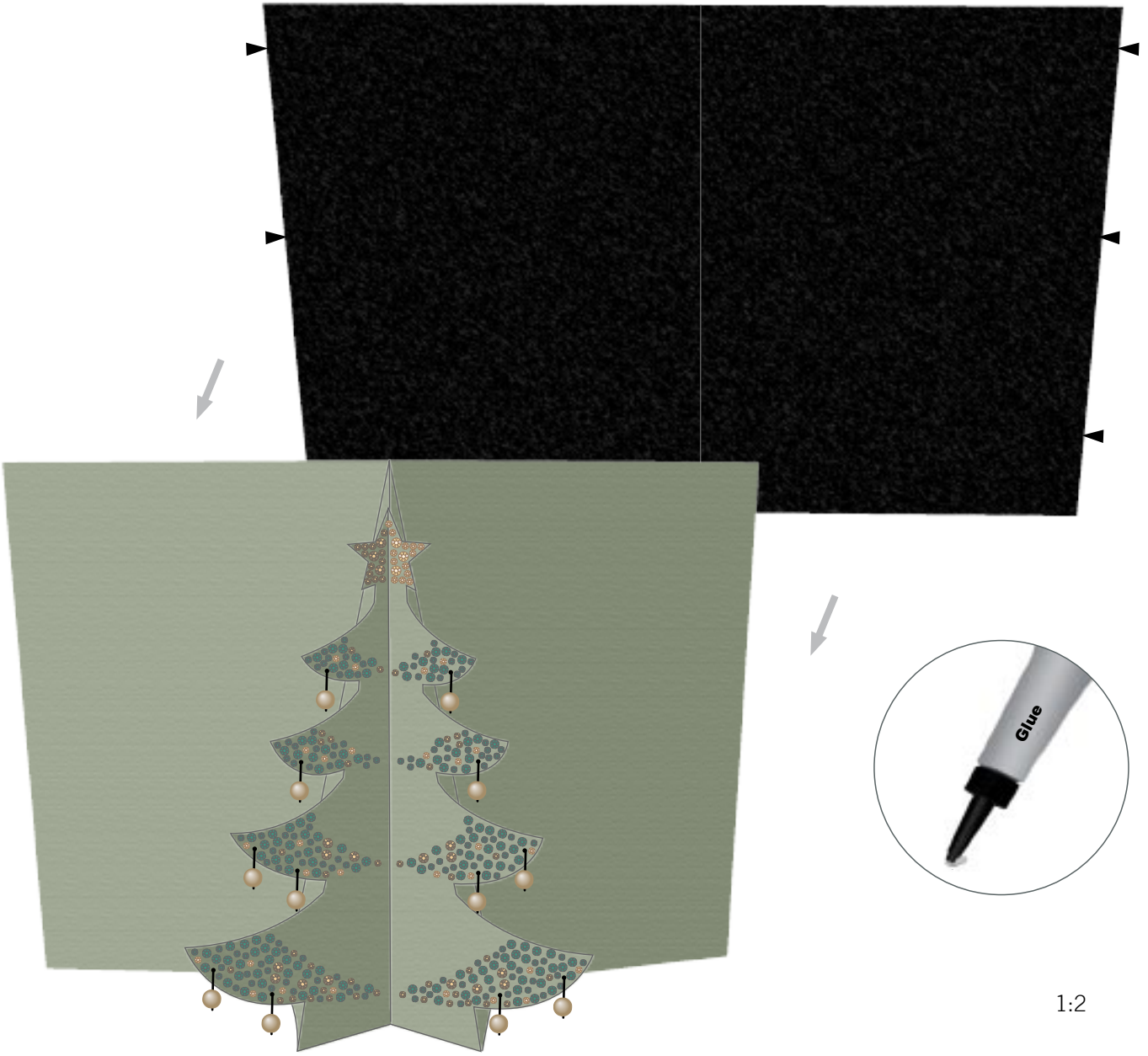
1



2

Repeat x11

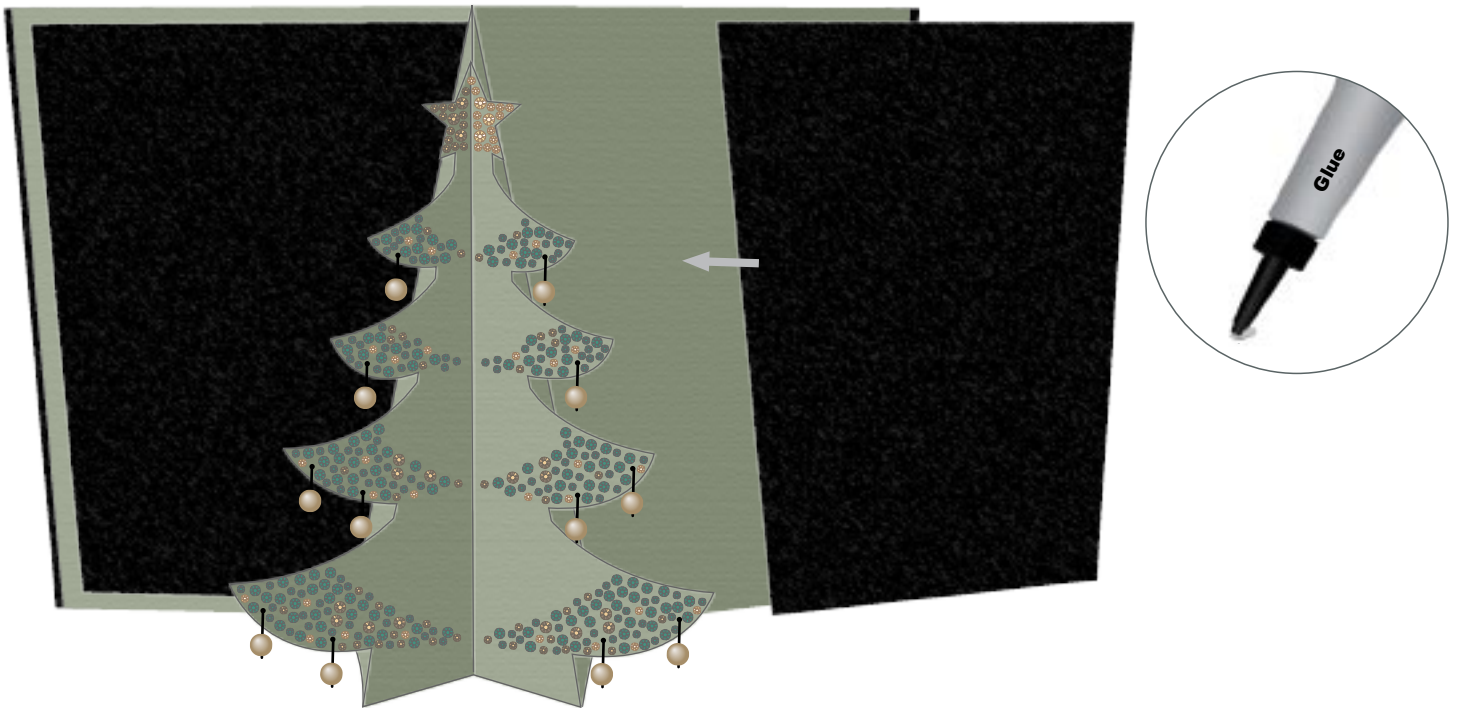
STEP 12



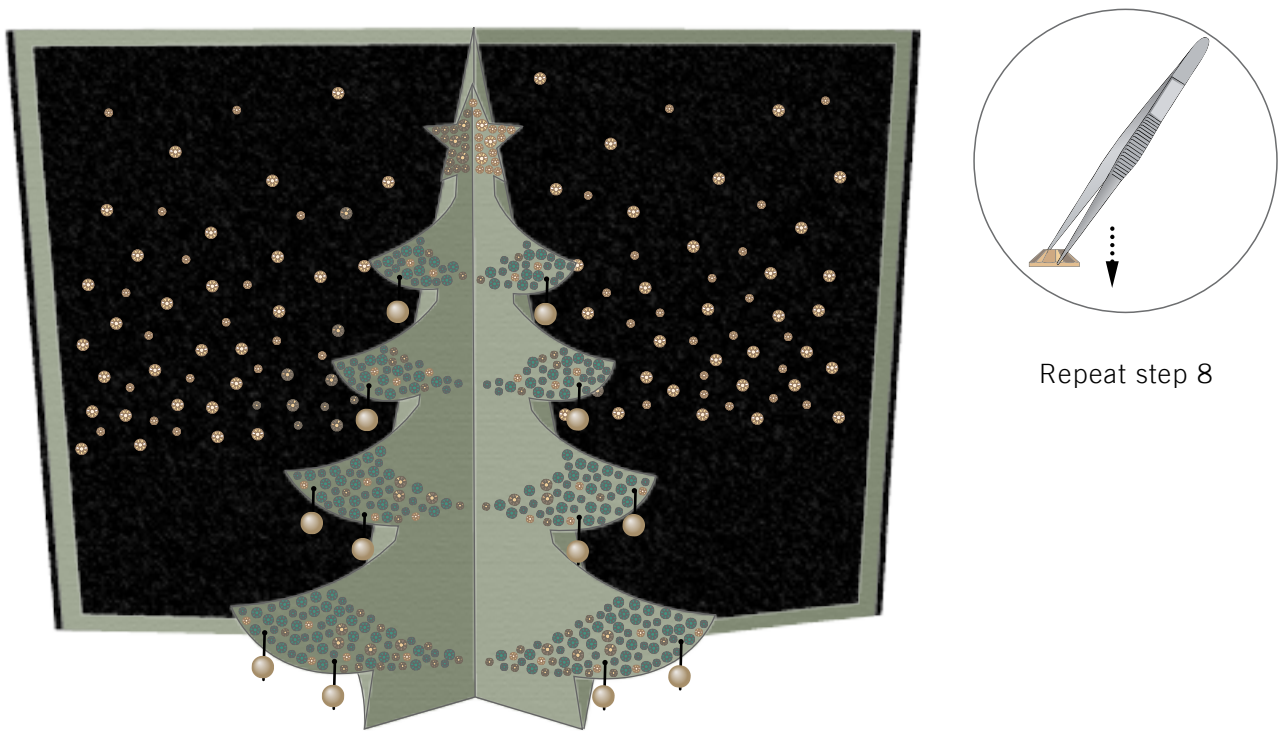
1:2



STEP 13



STEP 14



Repeat step 8

CREATE YOUR STYLE with CRYSTALLIZED™ – *Swarovski Elements* Design Elements Design Project Kirigami Card Christmas Tree

- Step 1: Draw the draft on the transparent paper with the help of a pencil and a ruler as shown in the illustration, the lines should intersect each other at the edges. Red lines indicate the folds that go up and blue lines indicate the folds going down.
- Step 2: Staple the transparent paper on to the cardboard as shown in the illustration.
- Step 3: Using the needle, make a hole through the transparent paper and cardboard at the points where the lines intersect as is shown in the illustration.
- Step 4: Remove the transparent paper from the cardboard; you would be left with the holes on the cardboard.
- Step 5: Draw the lines between the points and make partial cut lines in the places which are supposed to be folded as shown. Do not cut through card board – just cut a bit of surface area where red and blue lines are in illustration so that part is easier to fold. Then Fold the parts as shown in illustration.
- Step 6: Cut out the rest of the pattern as shown in the illustration (Be careful not to cut out where red and blue lines are!).
- Step 7: Pin down holes with a needle as shown in the illustration.
- Step 8 – 9: Apply CRYSTALLIZED™ Crystal-it on the Christmas tree as shown in the illustrations in step 8 and 9. Apply 2 and 3 mm crystals in Emerald, Crystal Golden Shadow and Crystal Dorado.
- Step 10: Cut 12 pieces of wire each 3.5 cm long and bend a 90° angle at 1.5 cm. Slide in CRYSTALLIZED™ Crystal Pearls article 5810 on the longer side of the wire and form a hook with the round nose pliers as shown in the illustration.
- Step 11: Insert the wire into one of the holes of the tree and close the hook. Cut the wire short after the bend as shown in the illustration. Repeat this for all the other holes.
- Step 12: Glue the black cardboard onto the Christmas card tree pattern.
- Step 13: Glue two black card board pieces onto green card board behind tree as shown in the illustration.
- Step 14: Apply CRYSTALLIZED™ Crystal- its onto black card board.